

# SZYBKOZŁĄCZA

## IBC

**Materiał:** Polipropylen  
**Uszczelnienie:** Polipropylen małej gęstości (LDPE)  
**Rozmiary:** S60x6  
 S76x6  
 S92x4  
 S100x8  
**Temp. Pracy:** Od -20°C do +80°C  
**Ciśnienie:** 7 bar  
**Zastosowanie:** Przyłącza do paletopojemników.



### IBC

#### Gwint wewnętrzny IBC na GZ BSP

| Index          | Gwint wewn. IBC | Gwint BSP | Materiał     |
|----------------|-----------------|-----------|--------------|
| HMFB/075UD/027 | S60x6           | ¾"        | Polipropylen |
| HMFB/10UD/027  | S60x6           | 1"        | Polipropylen |
| HMFB/12UD/027  | S60x6           | 1 ¼"      | Polipropylen |
| HMFB/15UD/027  | S60x6           | 1 ½"      | Polipropylen |
| HMFB/20UD/027  | S60x6           | 2"        | Polipropylen |
| HMFU/20UD/027  | S60x6           | S60x6     | Polipropylen |
| HMFB/225U/027  | S75x6           | 2"        | Polipropylen |
| HMFU/926U/027  | S92x4           | S60x6     | Polipropylen |
| HMFB/30U/027   | S100x8          | 3"        | Polipropylen |
| HMFU/32U/027   | S100x8          | S60x6     | Polipropylen |



#### Gwint wewnętrzny IBC na GZ BSP obrotowy

| Index             | Gwint wewn. IBC | Gwint BSP | Materiał     |
|-------------------|-----------------|-----------|--------------|
| HMFBS/60UD10PB/02 | S60x6           | 1"        | Polipropylen |



#### Gwint wewnętrzny IBC na GW BSP

| Index         | Gwint wewn. IBC | Gwint BSP | Materiał     |
|---------------|-----------------|-----------|--------------|
| IBCGWS60025   | S60x6           | 1"        | Polipropylen |
| HFFB/12UD/027 | S60x6           | 1 ¼"      | Polipropylen |
| HFFB/15UD/027 | S60x6           | 1 ½"      | Polipropylen |
| HFFB/20UD/027 | S60x6           | 2"        | Polipropylen |
| HFFB/32U/027  | S100x8          | 2"        | Polipropylen |



#### Gwint wewnętrzny IBC na GW BSP obrotowy

| Index             | Gwint wewn. IBC | Gwint BSP | Materiał     |
|-------------------|-----------------|-----------|--------------|
| HFFSB/60UD075B/02 | S60x6           | ¾"        | Polipropylen |
| HFFSB/60UD075B/02 | S60x6           | 1"        | Polipropylen |
| HFFSB/60UD12B/027 | S60x6           | 1 ¼"      | Polipropylen |
| HFFSB/60UD15B/027 | S60x6           | 1 ½"      | Polipropylen |
| HFFSB/60UD20B/027 | S60x6           | 2"        | Polipropylen |



# TOBI

ul. Piółunowa 7, 54-530 Wrocław

tel. 71 349 29 17 e-mail: info@wezetobi.pl www.wezetobi.pl

### Końcówka pod wąż z GW IBC

| Index         | Gwint wewn. IBC | DN | Materiał     |
|---------------|-----------------|----|--------------|
| HFUD/21T/027  | S60x6           | 25 | Polipropylen |
| HFUD/212T/027 | S60x6           | 32 | Polipropylen |
| HFUD/215T/027 | S60x6           | 38 | Polipropylen |
| HFUD/20T/027  | S60x6           | 50 | Polipropylen |



### Camlock męski typ A z GW IBC

| Index        | Gwint wewn. IBC | Camlock  | Materiał     |
|--------------|-----------------|----------|--------------|
| CMA/10UD/027 | S60x6           | A 1"     | Polipropylen |
| CMA/15UD/027 | S60x6           | A 1 1/2" | Polipropylen |
| CMA/20UD/027 | S60x6           | A 2"     | Polipropylen |
| CMA/30U/027  | 100x8           | A 3"     | Polipropylen |



### Camlock męski typ A z GW IBC przedłużony

| Index        | Gwint wewn. IBC | Camlock | Materiał     |
|--------------|-----------------|---------|--------------|
| CMA/20UD/027 | S60x6           | A 2"    | Polipropylen |



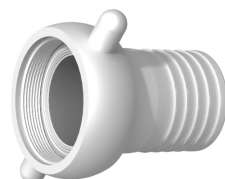
### Camlock żeński typ B z GZ IBC

| Index        | Gwint zewn. | Camlock | Materiał     |
|--------------|-------------|---------|--------------|
| CFB/20UD/027 | S60x6       | B 2"    | Polipropylen |



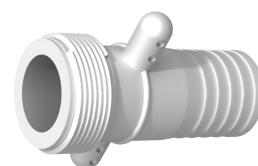
### Adapter GW BSP z nakrętką z bolcami pod wąż

| Index       | Gwint wewn. | Wąż | Materiał     |
|-------------|-------------|-----|--------------|
| LFB/15S/025 | 1 1/2"      | 38  | Polipropylen |
| LFB/20S/025 | 2"          | 50  | Polipropylen |
| LFB/25S/025 | 2 1/2"      | 63  | Polipropylen |
| LFB/30S/025 | 3"          | 75  | Polipropylen |
| LFB/40S/025 | 4"          | 100 | Polipropylen |



### Adapter GZ BSP z nakrętką z bolcami pod wąż

| Index       | Gwint zewn. | Wąż | Materiał     |
|-------------|-------------|-----|--------------|
| LMB/15S/025 | 1 1/2"      | 38  | Polipropylen |
| LMB/20S/025 | 2"          | 50  | Polipropylen |
| LMB/25S/025 | 2 1/2"      | 63  | Polipropylen |
| LMB/30S/025 | 3"          | 75  | Polipropylen |
| LMB/40S/025 | 4"          | 100 | Polipropylen |



### Adapter GW IBC na GZ IBC

| Index         | Gwint wewn. IBC | Gwint zewn. IBC | Materiał     |
|---------------|-----------------|-----------------|--------------|
| HMFU/20UD/027 | S60x6           | S60x6           | Polipropylen |
| HMFU/225U/027 | S75x6           | S60x6           | Polipropylen |
| HMFU/32U/027  | S100x8          | S60x6           | Polipropylen |



# TOBI

ul. Piółunowa 7, 54-530 Wrocław

tel. 71 349 29 17

e-mail: info@wezetobi.pl www.wezetobi.pl

### Adapter GW IBC na GZ spożywczy DIN 11851

| Index             | Gwint wewn. IBC | Gwint zewn. DIN | Materiał     |
|-------------------|-----------------|-----------------|--------------|
| HMFR/2065UD/028   | S60x6           | Rd 65           | Polipropylen |
| HMFR/60UD78RD/028 | S60x6           | Rd 78           | Polipropylen |
| HMFR/3078U/028    | S100x8          | Rd 78           | Polipropylen |



### Adapter S60x6 na wtyk ogrodowy 12,5mm

| Index             | Gwint | Wtyk    | Materiał     |
|-------------------|-------|---------|--------------|
| HMFHL/05HL20UD/02 | S60x6 | 12,5 mm | Polipropylen |



### Końcówka pod wąż z GZ BSP i 6-kątem

| Index       | Gwint zewn. | Wąż DN | Materiał     |
|-------------|-------------|--------|--------------|
| HMB/05T/027 | 1/2"        | 13     | Polipropylen |
| HMB/75T/027 | 3/4"        | 19     | Polipropylen |
| HMB/10T/027 | 1"          | 25     | Polipropylen |
| HMB/12T/027 | 1 1/4"      | 32     | Polipropylen |
| HMB/15T/027 | 1 1/2"      | 38     | Polipropylen |
| HMB/20T/027 | 2"          | 50     | Polipropylen |
| HMB/30T/027 | 3"          | 75     | Polipropylen |



### Zawór kulowy IBC GW IBC / Camlock męski z GZ BSP

| Index           | Gwint wewn. | Camlock | Materiał     |
|-----------------|-------------|---------|--------------|
| DL2/60UF/2CAM/7 | S60x6       | A 2"    | Polipropylen |



### Zawór kulowy IBC GW IBC / GZ IBC

| Index           | Gwint wewn. | Gwint zewn. | Materiał     |
|-----------------|-------------|-------------|--------------|
| DL2/60UF/60UM/7 | S60x6       | S60x6       | Polipropylen |
| DL2/60UF/2NPM/7 | 2" NPS      | S60x6       | Polipropylen |



# TOBI

ul. Piółunowa 7, 54-530 Wrocław

tel. 71 349 29 17

e-mail: info@wezetobi.pl www.wezetobi.pl